

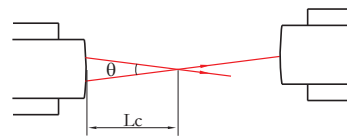
Single Mode Dual Fiber Collimator

Features:

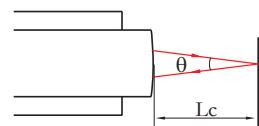
- Low Insertion Loss
- High Return Loss
- Telcordia Compliant
- Epoxy-Free in Optical Path
- RoHS Compliant

Applications:

- DWDM
- Switches
- Isolators
- Circulators



Setup 1. Transmission Type (abbr. "T")



Setup 2. Reflection Type (abbr. "R")

Specifications:

Parameter	Unit	Grade "A"				
Type		Transmission Type		Reflection Type		
Working Distance	mm	<20	20~100	2Lc		
Central Wavelength (λ_c)	nm	1310 or 1550				
Working Wavelength (23°C)	nm	1310+/-40 or 1550+/-40				
Cross Length (Lc)	mm	NA	NA	2.0+/-0.2	2.5+/-0.2	
Cross Angle (θ)	degree	NA	NA	3.6+/-0.2	2.9+/-0.2	
Insertion Loss ^{1,2,3} (λ_c , 23°C)	Typ.	dB	0.20	0.25	0.20	0.20
	Max.	dB	0.25	0.35	0.25	0.25
Return Loss ² (λ_c , 23°C)	Min.	dB	60	60	60	60
Beam Waist (λ_c , 23°C, $1/e^2$)	Max.	mm	0.50	0.70	0.50	0.70
Housing Diameter (O.D.)	Typ.	mm	2.80 (glass tube)			
			3.20 (metal tube)			
Housing Length (L)	Typ.	mm	9.0			
Fiber Type	250 μ m Corning SMF-28e bare fiber					
Fiber Length	Min.	m	1.5			
Tensile Load	Min.	N	5			
Power Handling	Max.	mW	500			
Operating Temperature			°C			
Storage Temperature			°C			

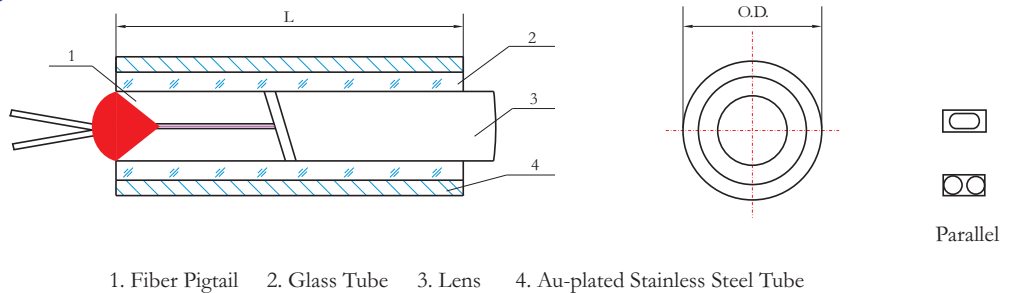
1. Transmission type and reflection type specs are measured by setup 1 & 2 respectively.

2. All specs are measured without connectors, IL is 0.20dB higher with xx/APC connectors, RL 5dB lower with xx/APC connectors; IL 0.25dB higher with xx/UPC and xx/PC connectors, RL 10dB lower with xx/UPC and xx/PC connectors.

3. Dual window, like 1310/1550 nm, IL is 0.05dB higher for working distance shorter than 70mm, IL is 0.1dB higher for working distance longer than or equal to 70mm.

Note: Other specs are available upon request.

Dimension:



1. Fiber Pigtail 2. Glass Tube 3. Lens 4. Au-plated Stainless Steel Tube

Figure 1. Single Mode Dual Fiber Collimator

Order Information:

XXXX - X - XXXX - X - XXXX - X - XX(X) - XX - XX
 A B C D E F G H I

A	Collimator Type	KCDT=Transmission Type KCDR=Reflection Type
B	Grade	A=Grade "A" S=Custom
C	Fiber Type	250S=250μm bare fiber
D	Pigtail Type	P=Parallel
E	Wavelength	1310=1310nm 1550=1550nm
F	Metal Tube	N=None Y=With
G	Working Distance ("T" Type)	005=5mm
		020=20mm
		100=100mm
G	Cross Length ("R" Type)	20=2.0mm
		25=2.5mm
H	Lens Type	C=C-Lens
I	Connector	NN=W/O connector XY=With connector ¹

1. Please specify the type of connector as below when ordering.

Mechanical Type	Other	SC	FC	ST	MU	LC
X	0	1	2	3	4	5
Physical Contact Type	Other	PC	UPC	APC		
Y	0	1	2	3		