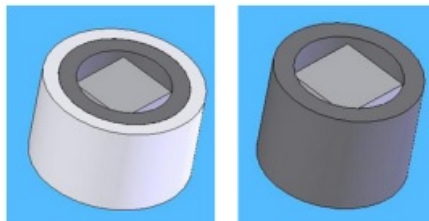


# Free Space Isolator

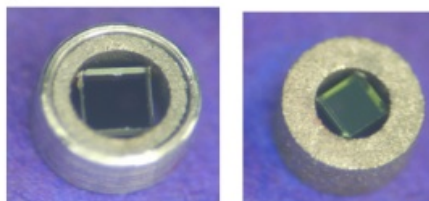
## Features:

- High Isolation
- Low Insertion Loss
- Compact Size
- Environmental Stable
- RoHS Compliant



## Applications:

- Fiber Laser
- Tunable Laser
- Optical Transmitters



## Specifications:

Parameter	Unit	Single Stage	Dual Stage
Central Wavelength (l c)	nm	1310, 1550 or CWDM wavelength	
Wavelength Rang	nm	l c+/-20	
Isolation (l c, 23°C)	Min. dB	35 (Typ. 40)	55 (Typ. 60)
Insertion Loss (l c, 23°C)	Max. dB	0.3 (Typ. 0.15)	0.5 (Typ. 0.3)
Operating Temperature	°C	0~70	
Storage Temperature	°C	-40~85	

### Dimension:

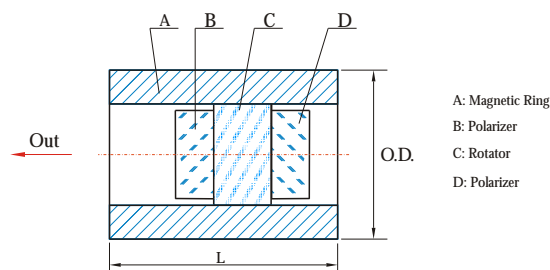


Figure 1. Free Space Isolator

### Order Information:

KFSI - X - XXXX - X - XX - X  
           A      B      C      D      E

A	Grade	S=Single Stage
		D=Dual Stage
B	Wavelength	1310=1310nm
		1550=1550nm
		1470=1470nm
		1490=1490nm
		.....
C	Size (mm)	1=f3.0´3.0
		2=f3.0´2.0
		3=f2.5´3.0
		4=f2.5´2.0
		5=f2.5´1.4
		6=f2.5´1.1
		7=f1.8´1.7
		8=f1.8´1.1
D	Clear Aperture	S=Custom
		04=0.4mm
		07=0.7mm
		09=0.9mm
E	Metal Tube	SS=Custom
		N=None
		Y=With