

GDL-A004-LI



Key Features:

High Reliability
 Compactable size
 Auto Power Control
 Low Power Consumption
 Wide Operating Temperature

Applications:

Line Laser Levels

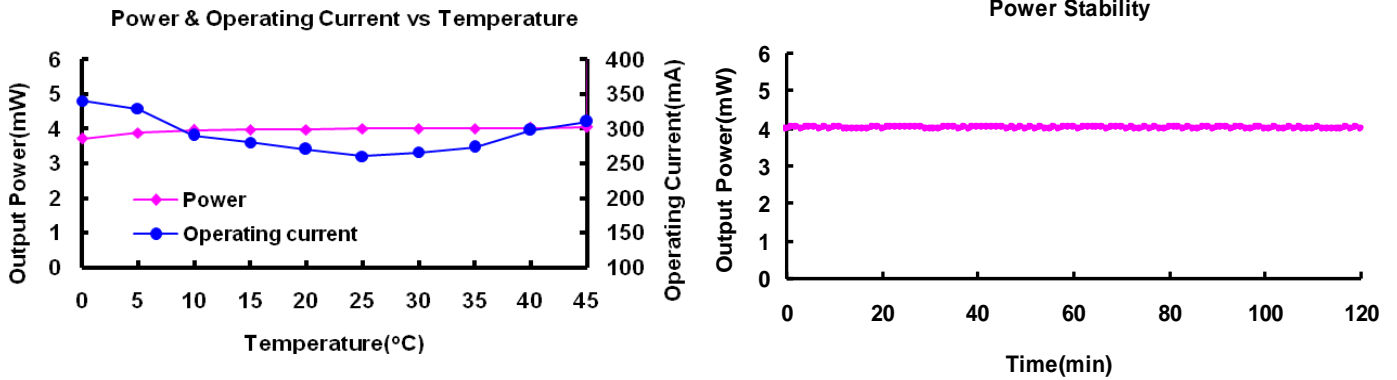
Model Number		GDLM-A004-LI			
Optical Parameters		Specs			Conditions
		Min	Typ	Max	
Wavelength		531nm	532nm	533nm	
Output Power		3.5mW	4mW ^①	4.5mW	At 25 °C
Power Stability	2hours @ Constant Temp	-	-	+/-5%	APC
	Over Operating Temp Range	-	-	+/-25%	
Operating Temperature (Case)		10~+40 °C	0~+45 °C	-	APC
Residual IR		-	-	1%	
Line Width		-	2.5mm	-	At 5m
Leveling Accuracy		-	-	1mm	At 10m
Fan Angle		-	120°	-	
Warm Up Time		-	1s	-	0~45 °C
Electrical Parameters					
LD Working Current		-	260mA ^②	400mA	0~45 °C
LD Working Voltage		1.6V	1.9V	2.2V	
Monitor Current		5uA	-	110uA	
GDL Power Consumption		-	0.52W ^③	0.88W	0~45 °C
Mechanical Parameters					
Laser Head Dimensions	Length	32.3mm	33.3mm	34.3mm	
	Diameter	11.75mm	11.9mm	12.05mm	
Beam Alignment Tolerance	Angle	-	7mrad	17.5mrad	
Laser Weight		-	6g	-	
Reliability					
Storage Temperature		-	-20 to +60 °C	-	
Shock		-	1000g, 1ms, 6 shocks	-	3 axes, 2 shocks/axis
Vibration		-	20~2000Hz, 0.02g ² /Hz	-	3 axes, 1hr/axis
Expected Lifetime (MTTF)		10000hrs	-	-	Room temperature

Note: ^① Dot power

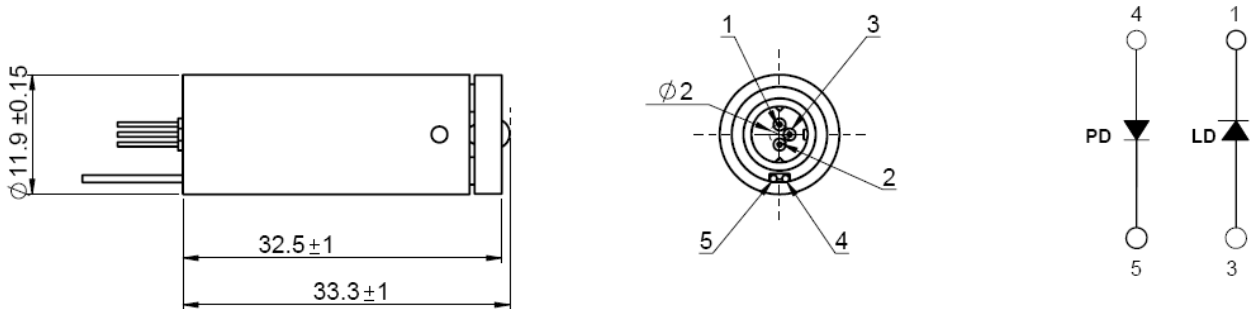
^② 4mW at 25 °C

^③ 4mW at 25 °C

Typical Output Performance



Dimensions and Pin Configuration (Unit: mm)



Pin Configurations : 1. LD- 2. None 3. LD+
 4. PD+ 5. PD-