

C-Polarizer

Applications:

- DCE/DGE
- Circulators
- Interleavers

Capability:

Material: YVO_4 & Crystal quartz

Typical Dimension: 2.6 x 2.6 x 7mm

Beam Deviation: 3arc min.

Flatness: $\lambda/10@632.8\text{nm}$

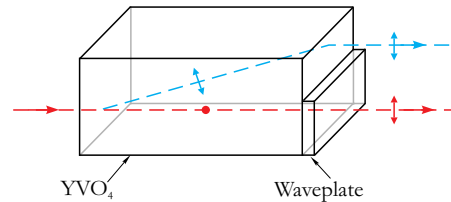
Extinction Ratio: $>5 \times 10^3$

Surface Quality (scratch/dig): better than 20-10

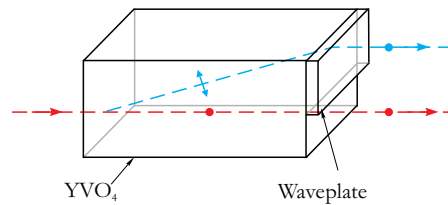
Wavelength Range: $\lambda_c \pm 20\text{nm}$

AR Coating: $R < 0.20\% @ \lambda_c \pm 40\text{nm}$, $\lambda_c = 1310, 1550\text{nm} \dots$

Other sizes and coatings are also available upon request.



Type 1: P Polarization



Type 2: S Polarization

