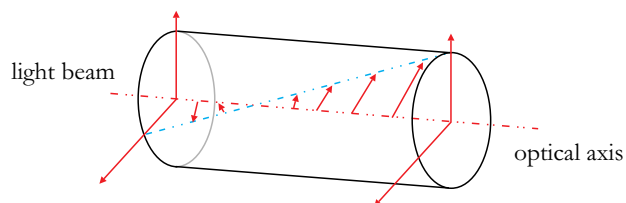


# Polarization Rotators

## Applications:

- Projector
- Optical Measurement Systems
- Tunable Lasers



## Capability

| Attribute                     | Commercial  | High Precision     |
|-------------------------------|---|--------------------|
| Typical Material              | Quartz  | Quartz             |
| Typical Dimension (mm)        | 10, 12.7, 20, 25.4  | 10, 12.7, 20, 25.4 |
| Diameter Tolerance (mm)       | +0.00/-0.1  | +0.00/-0.03        |
| Rotation Accuracy (arc min.)  | <5  | <1                 |
| Parallelism (arc second)      | <20   | <5                 |
| Flatness (per 25mm@632.8nm)   | 1/8   | $\lambda/20$       |
| Surface Quality (scratch/dig) | 20-10   | 10-5               |
| Bevel (face width x 45° mm)   | 0.2~0.5   | 0.05~0.2           |
| Coating                       | Wavelength: customer specified, Reference to pages 65-75<br>Single wavelength AR: R≤0.25% per surface<br>Broadband AR: R≤0.5% per surface |                    |

